



## GlobalLink™ EMC Documentum Adaptor

EMC Documentum is a content management system designed to help customers more efficiently maintain and organize their business content. Documentum provides a consistent workflow that streamlines the process of content publishing, leading to a superior user experience.

Translations.com's GlobalLink Project Director technology integrates seamlessly with EMC Documentum Server, Webtop, Web Publisher, and Documentum Administrator to help content authors and managers initiate, automate, and manage the translation process more efficiently and cost-effectively. GlobalLink Project Director extends the powerful functionality of EMC Documentum, providing users with a comprehensive, integrated solution to manage enterprise content worldwide.

## EMC DOCUMENTUM ADAPTOR AT A GLANCE

### Seamless Integration

Business users can initiate translation workflows through GlobalLink Project Director without having to leave the Documentum user interface. Users can send files from a Documentum Server Repository or a cabinet using Webtop, Publisher, or Administrator. Upon retrieval, translated pages can be automatically imported into Documentum. This process can be initiated at any point during the Documentum workflow or lifecycle. Within GlobalLink Project Director, users can access reports of which pages were submitted, track project status in real time, and access translation history for each individual page.

### Content Control

In addition to giving Documentum users the ability to easily identify and route content for translation, GlobalLink Project Director enhances control over source-language content during the translation process. Business users can elect to either lock or unlock source-language documents for editing, ensuring strict synchronization between original and target-language content. And since GlobalLink Project Director is vendor-neutral, Documentum users can work with any combination of internal or external translation resources—all coordinated through a centralized, web-based application that offers advanced project tracking and reporting.

### Translation Memory Integration

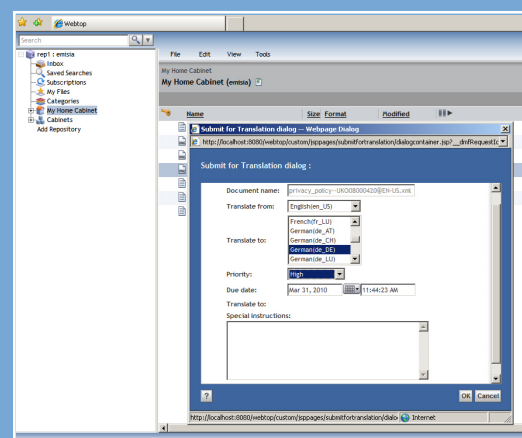
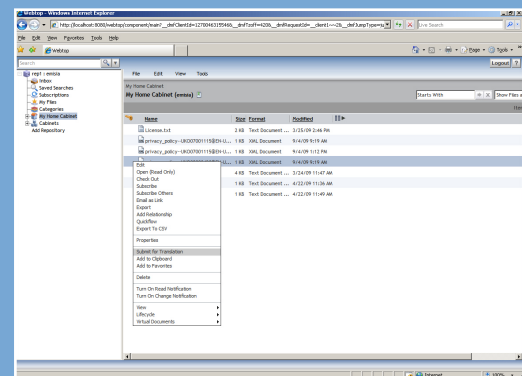
GlobalLink Project Director integration with GlobalLink™ Server enables Documentum users to reap the benefits of translation memory (TM) on all projects. Through this integration, source-language content is automatically pre-processed against a server-based TM, which pre-populates all projects with 100% match content before they are sent for localization, resulting in maximum content leveraging and cost savings. Documentum users can also request multiple estimates, receive instant price quotes, and have complete visibility into TM leveraging statistics via the GlobalLink Project Director dashboard.

### Rapid Return on Investment

GlobalLink Project Director provides immediate relief to IT departments and business users overburdened by the complex demands of supporting manual initiation and control of multilingual content workflows. The integrated solution also provides better visibility into the localization process for budgetary analysis.

## RAPID DEPLOYMENT

The integration of GlobalLink Project Director with Documentum has a minimal impact on your IT environment and staff. No dedicated hardware or IT personnel are required, and Translations.com will provide world-class technical support and installation services to meet all your global needs.



Key Features	Benefits
Documentum Integration	<ul style="list-style-type: none"> <li>Seamless integration with Documentum workflows via web services.</li> <li>Browse and select content manually in Documentum.</li> <li>Automatically initiate translation projects through Documentum workflows.</li> <li>Export content from Documentum with no manual conversion or IT dependencies.</li> <li>Translated content is automatically imported back into target-language repositories within the Documentum environment.</li> <li>Automated email notifications from GlobalLink Project Director, alerting Documentum users to project milestones or status changes.</li> <li>Easily create custom processes for different file formats.</li> <li>Build user-specific or vendor-specific workflows.</li> </ul>
Translation Memory Integration	<ul style="list-style-type: none"> <li>Pre-process content against translation memory.</li> <li>Automatically populate files with 100% match content.</li> <li>Create .TXML, .XLIFF, and .TTX formats.</li> <li>Reduce translation costs and turnaround time.</li> <li>Maximize content consistency.</li> </ul>
Vendor Management	<ul style="list-style-type: none"> <li>Support a multi-vendor approach for localization.</li> <li>Store rate and turnaround time metrics.</li> <li>Create workflows for internal resources.</li> </ul>
Project Tracking	<ul style="list-style-type: none"> <li>Real-time status updates on all projects.</li> <li>View delivery schedules and track performance.</li> </ul>
Automated File Parsing	<ul style="list-style-type: none"> <li>Automatically extract content from virtually any file format.</li> <li>Prepare content segments for translation with no manual effort.</li> </ul>
Advanced Reporting	<ul style="list-style-type: none"> <li>Track spend and TM leveraging statistics.</li> <li>Configure reports by user, organization, or vendor.</li> </ul>

## The GlobalLink Product Suite

### An Enterprise Platform for Managing Multilingual Content

GlobalLink is a modular suite of technology products that provides enterprise-wide solutions for organizations that must communicate globally.

The GlobalLink Product Suite drastically reduces the time, effort, and money required not only in the translation process itself, but also in each area of workflow surrounding the management of multilingual content. Each product in the suite can function either independently or as part of an integrated system to drive maximum efficiency.

The GlobalLink Product Suite includes:

- GlobalLink Project Director
- GlobalLink TM Server
- GlobalLink Translation & Review Portal
- GlobalLink Content Director
- GlobalLink Term Manager
- GlobalLink TransStudio
- GlobalLink Portal
- GlobalLink OneLink