



GlobalLink™ Day CMS Adaptor

Built atop Day Software's industry-leading CRX content repository, Day CQ5 provides a complete suite of applications designed to enable corporations to increase their ROI on marketing and data management investments. Using this technology, interactive marketers are able to more effectively engage customers and prospects in order to increase competitive advantage and drive revenue.

Translations.com's GlobalLink Project Director integrates with CQ5 WCM, providing users with a powerful solution to initiate, automate, control, track, and complete all facets of the translation process. The unique combination of the robust CQ5 WCM functionality and the extended localization workflow capabilities of Project Director gives Day customers a comprehensive platform to manage enterprise content for markets around the globe.

DAY CQ5 WCM ADAPTOR AT A GLANCE

Seamless Integration

Business users can initiate translation workflows through GlobalLink without having to leave the Day CQ5 User Interface. Content can also be automatically routed for translation via workflow integration.

Process Flexibility

GlobalLink Project Director integrates directly with Day CQ5 WCM workflows via web services, allowing content to automatically pass from source-language development to translation providers using customizable business rules. Content can be routed from source-language repository locations into a translation workflow, and then automatically returned to a designated target language repository with no manual effort on the client side.

Translation Memory Integration

GlobalLink Project Director integration with GlobalLink™ Server allows Day CQ5 WCM users to realize the benefits of translation memory on all of their projects. Translation memory (TM) is a tool that stores previously translated content, allowing clients to reuse content where appropriate. This integration provides Day CQ5 WCM users with maximum cost savings and flexibility, since source-language content is automatically routed out into a translation workflow and pre-processed against a server-based TM, which pre-populates projects with 100% match content before the project is submitted for localization. Day users can also request multiple estimates, receive instant price quotes, and have complete visibility into translation memory leveraging statistics via the GlobalLink Project Director dashboard.

Content Control

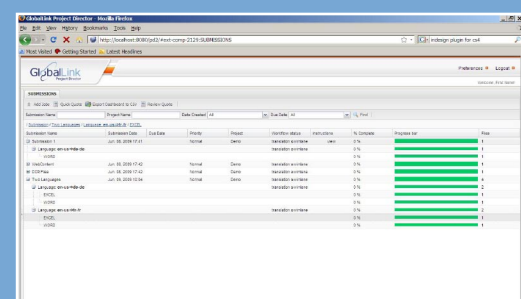
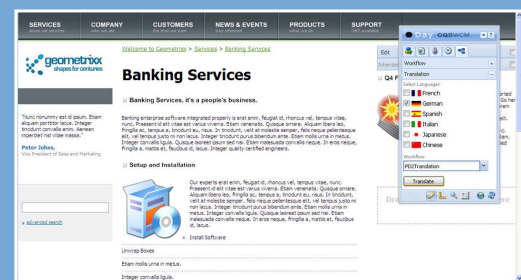
Seamless integration between CQ5 WCM and GlobalLink Project Director offers Day users the ability to easily select and route content for translation. Content can be selected manually or via automated workflow integration. And since GlobalLink Project Director is vendor-neutral, Day users can work with any combination of internal or external translation resources—all coordinated through a centralized application that offers advanced project tracking and reporting.

Rapid Return on Investment

GlobalLink Project Director provides immediate relief to IT departments and business users overburdened by the complex demands of supporting manual initiation and control of multilingual content workflows. The integrated solution also provides better visibility into the localization process for budgetary analysis.

RAPID DEPLOYMENT

The integration of GlobalLink Project Director with CQ5 WCM has a minimal impact on your IT environment and staff. No dedicated hardware or IT personnel are required, and Translations.com will provide world-class technical support and installation services to meet all your global needs.



Key Features	Benefits
Day CQ5 WCM Integration	<ul style="list-style-type: none"> Seamless integration with Day CQ5 WCM workflows via web services Browse and select content manually in Day CMS UI Automatically initiate translation projects through Day workflows Export content from Day with no manual conversion or IT dependencies Translated content automatically imported back into source language repositories within Day CQ5 WCM environment Automated email notifications from GlobalLink Project Director to Day users regarding project milestones or status changes Easily create custom processes for different file formats Build business user or vendor-specific workflows
Translation Memory Integration	<ul style="list-style-type: none"> Pre-process content against translation memory Automatically populate files with 100% match content Create .TXML, .XLIFF, and .TTX formats Reduce translation costs and turnaround time Maximize content consistency
Vendor Management	<ul style="list-style-type: none"> Support a multi-vendor approach for localization Store rate and turnaround time metrics Create workflows for internal resources
Project Tracking	<ul style="list-style-type: none"> Real-time status updates on all projects View delivery schedules and track performance
Automated File Parsing	<ul style="list-style-type: none"> Automatically extract content from virtually any file format Prepare content segments for translation with no manual effort
Advanced Reporting	<ul style="list-style-type: none"> Track spend and TM leveraging statistics Configure reports by user, organization, or vendor
Modular, Flexible Architecture	<ul style="list-style-type: none"> Published Web Services API Integrates with CMS, DMS, or database content via content mediators Integrates with GlobalLink Translation and Review Portal for internal content validation

The GlobalLink Product Suite

An Enterprise Platform for Managing Multilingual Content

The GlobalLink Localization Suite drastically reduces the time, effort, and money required not only in the translation process itself, but also in each area of workflow surrounding the management of multilingual content. Each product in the suite can function either independently or as part of an integrated system to drive maximum efficiency.

Modular Architecture

Modular architecture means that GlobalLink Project Director can easily scale to changing requirements as needed. In addition to back-end integration with GlobalLink TM Server, GlobalLink Project Director can be custom configured to integrate with modules such as GlobalLink Term Manager (glossary tool), GlobalLink Translation and Review Portal (online translation and review tool), or GlobalLink Content Director (content mediator for CMS, DMS, and database content).